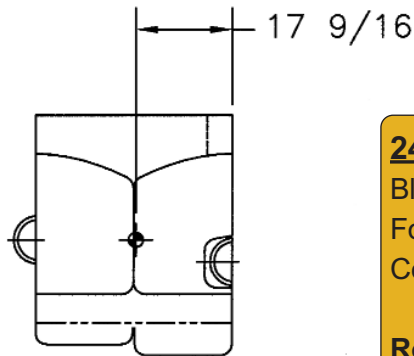


Metric Dimensions (m)

2.44x0.92x1.1

Metric Weight (kg)

2722



24SF Block

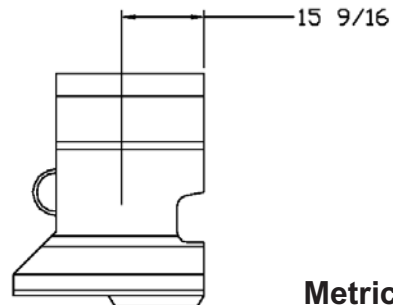
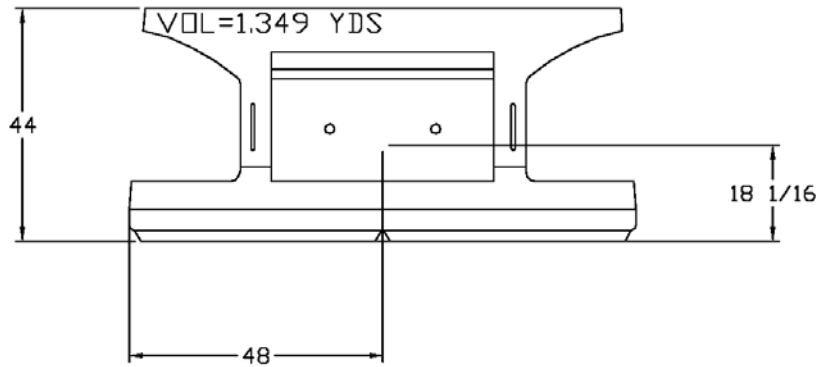
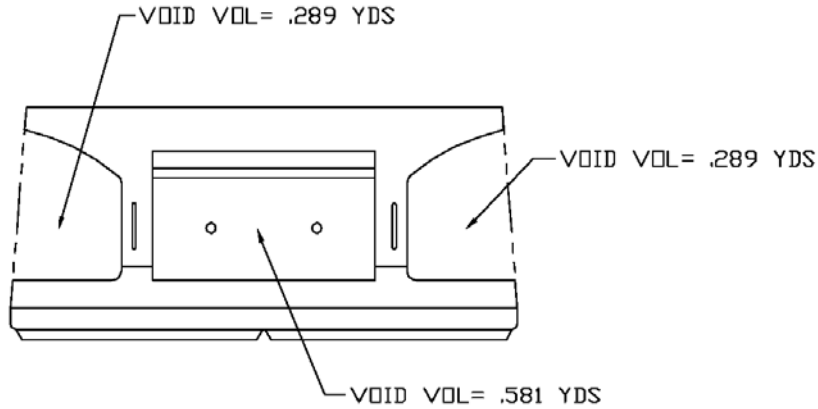
Block Wt. = 6,000 lbs

Form Wt. = 4,600 lbs

Concrete Volume = 1.5 cu. yds.

Rock In-fill for installation ~ 1.7 cu. yds.
 equivalent to 2.3 tons





24SF Top Block

Block Wt. = 5,400 lbs

Form Wt. = 4,930 lbs

Concrete Volume = 1.349 cu. yds.

Rock In-fill for installation ~ 1.5 cu. yds.

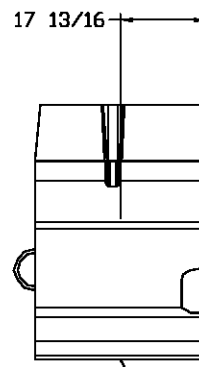
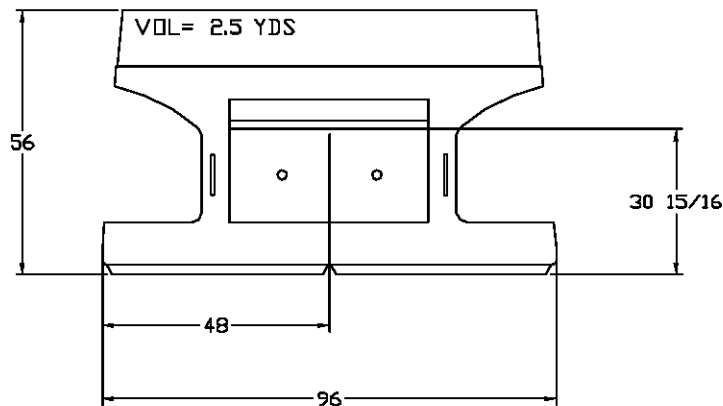
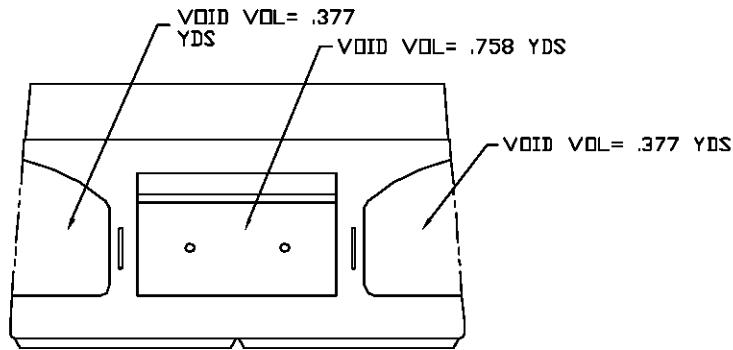
Metric Dimensions (m)

2.44x0.92x1.1

Metric Weight (kg)

2449





24SF Mass Extender Block

Block Wt. = 10,000 lbs
 Form Wt. = 5,119 lbs
 Concrete Volume = 2.5 cu. yds.

Rock In-fill for installation ~ 1.7 cu. yds.
 equivalent to 2.3 tons

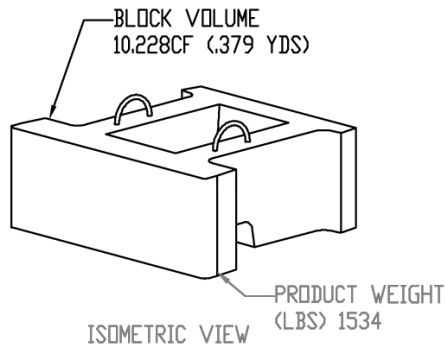
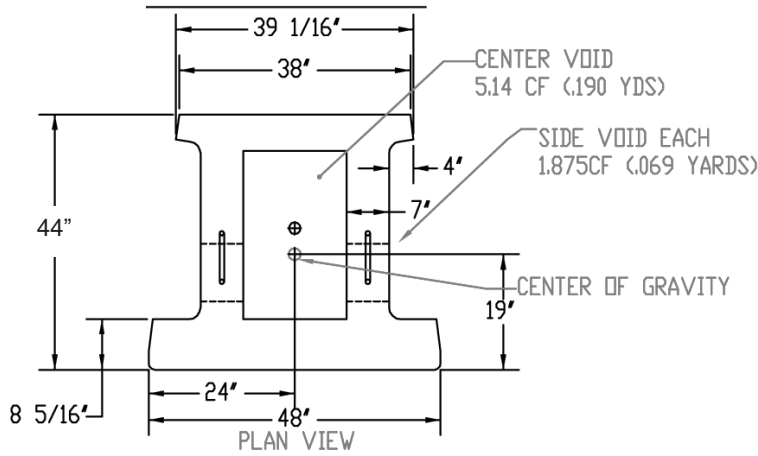
Metric Dimensions (m)

2.44x0.92x1.42

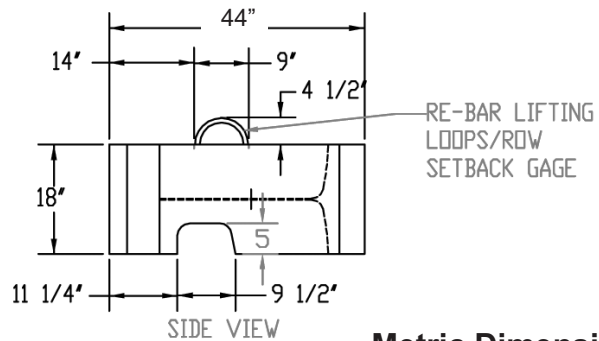
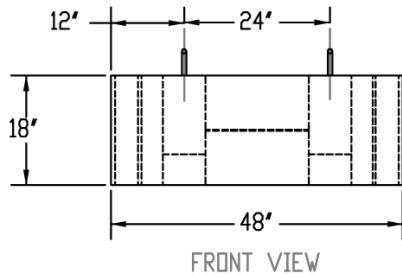
Metric Weight (kg)

4536





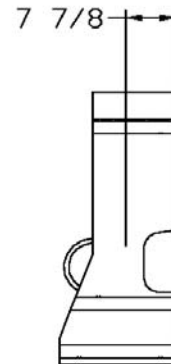
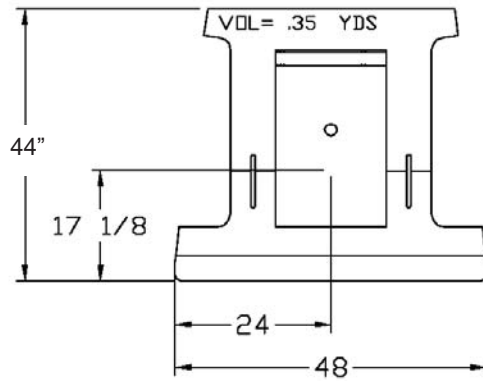
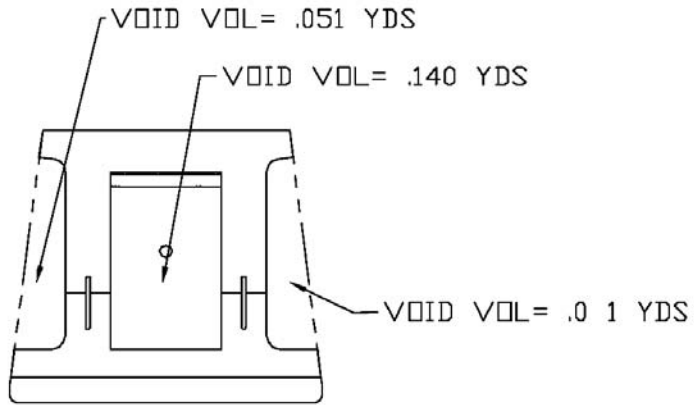
6SF Block
Block Wt. = 1,600 lbs
Form Wt. = 1,800 lbs
Concrete Volume = 0.4 cu. yds.
Rock In-fill for installation ~ 0.33 cu. yds.



Metric Dimensions (m)
1.22x0.46x1.1

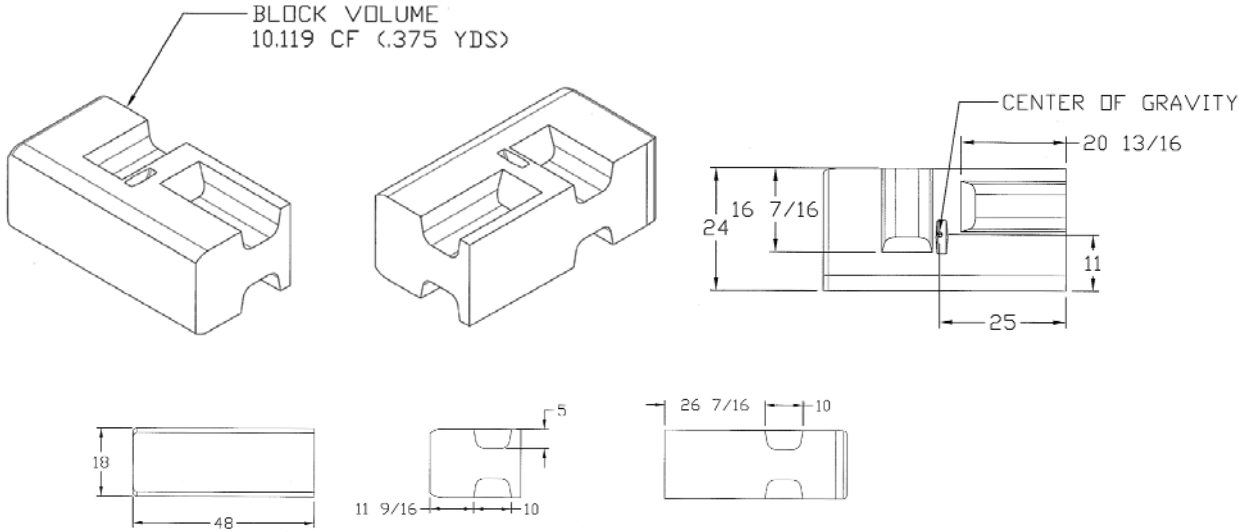
Metric Weight (kg)
680





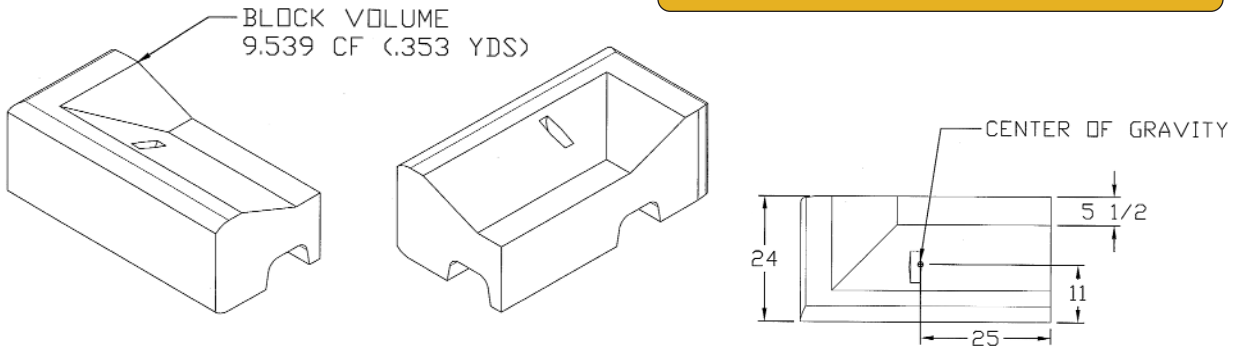
6SF Top Block
 Block Wt. = 1,400 lbs
 Form Wt. = 1,955 lbs
 Concrete Volume = 0.35 cu. yds.
Rock In-fill for installation ~ 0.31 cu. yds.





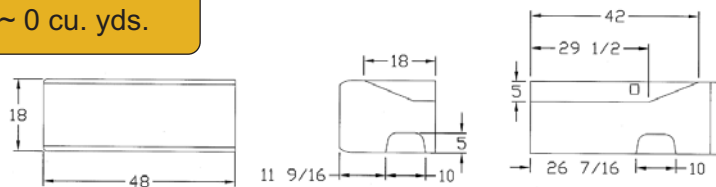
End Block

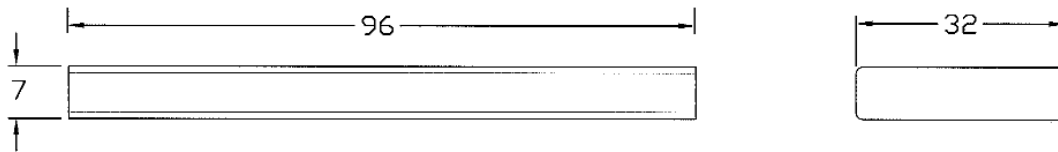
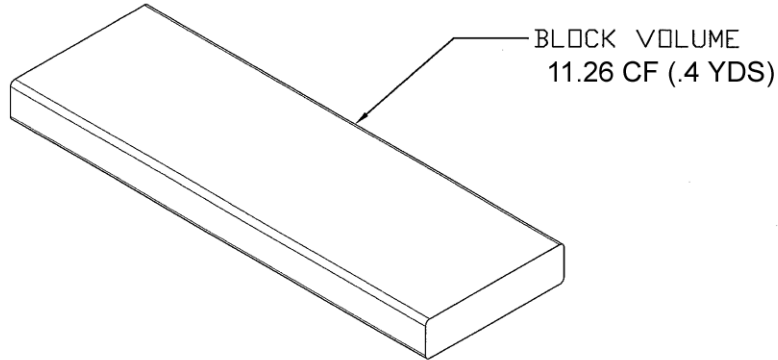
Block Wt. = 1,500 lbs
 Form Wt. = 1491lbs
 Concrete Volume = 0.375 cu. yds.
Rock In-fill for installation ~ 0 cu. yds.



End Top Block

Block Wt. = 1,412 lbs
 Concrete Volume = 0.353 cu. yds.
Produced with Insert in End form
Rock In-fill for installation ~ 0 cu. yds.





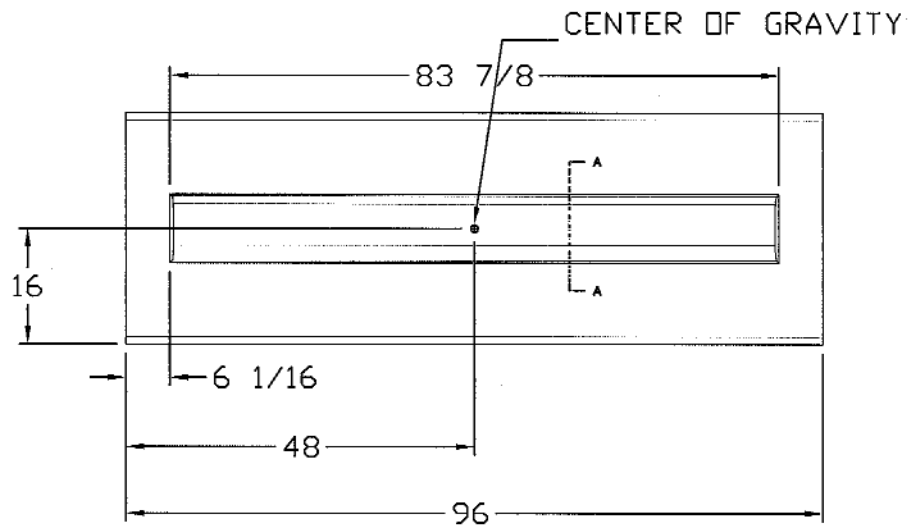
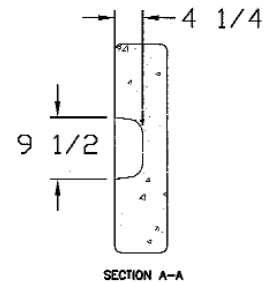
Cap/Step Block

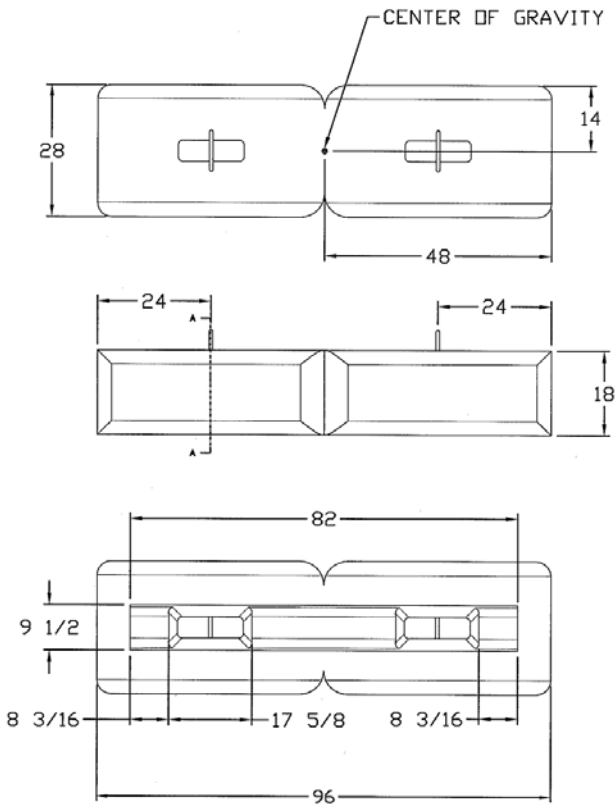
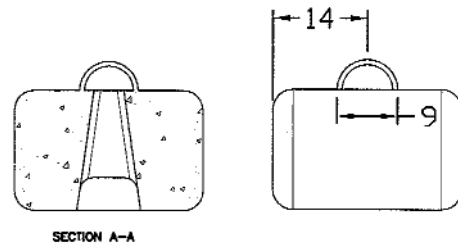
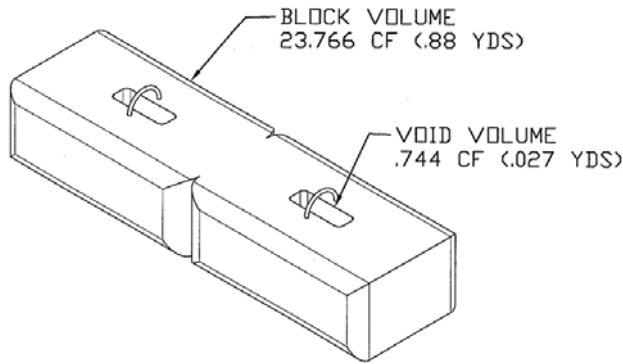
Block Wt. = 1,600 lbs

Form Wt. = 1,425 lbs

Concrete Volume = 0.4 cu. yds.

Rock In-fill for installation ~ 0 cu. yds.





Dual Face Block

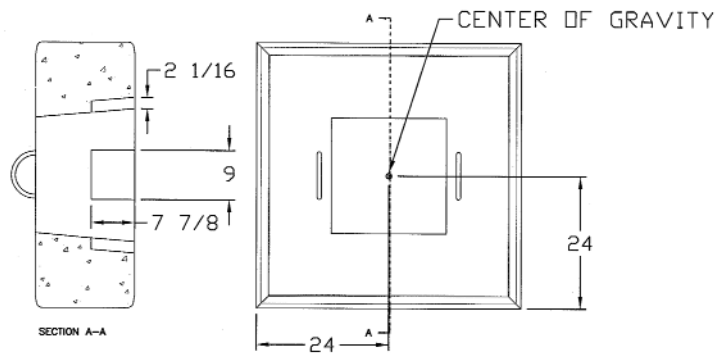
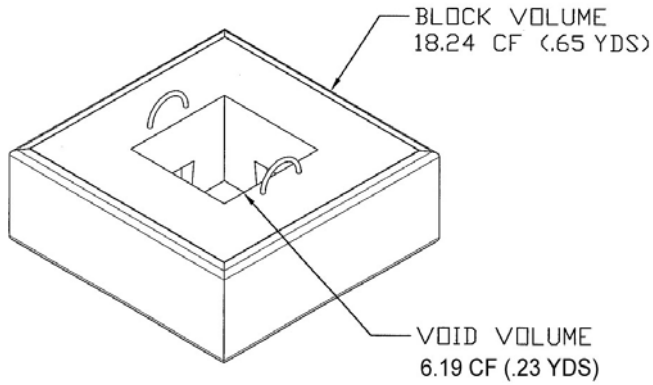
Block Wt. = 3,520 lbs

Form Wt. = 2,431 lbs

Concrete Volume = 0.88 cu. yds.

Rock In-fill for installation ~ 0 cu. yds.





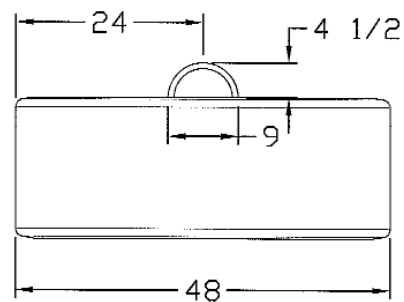
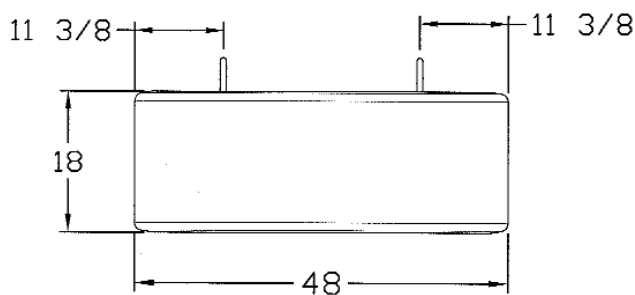
90° Block

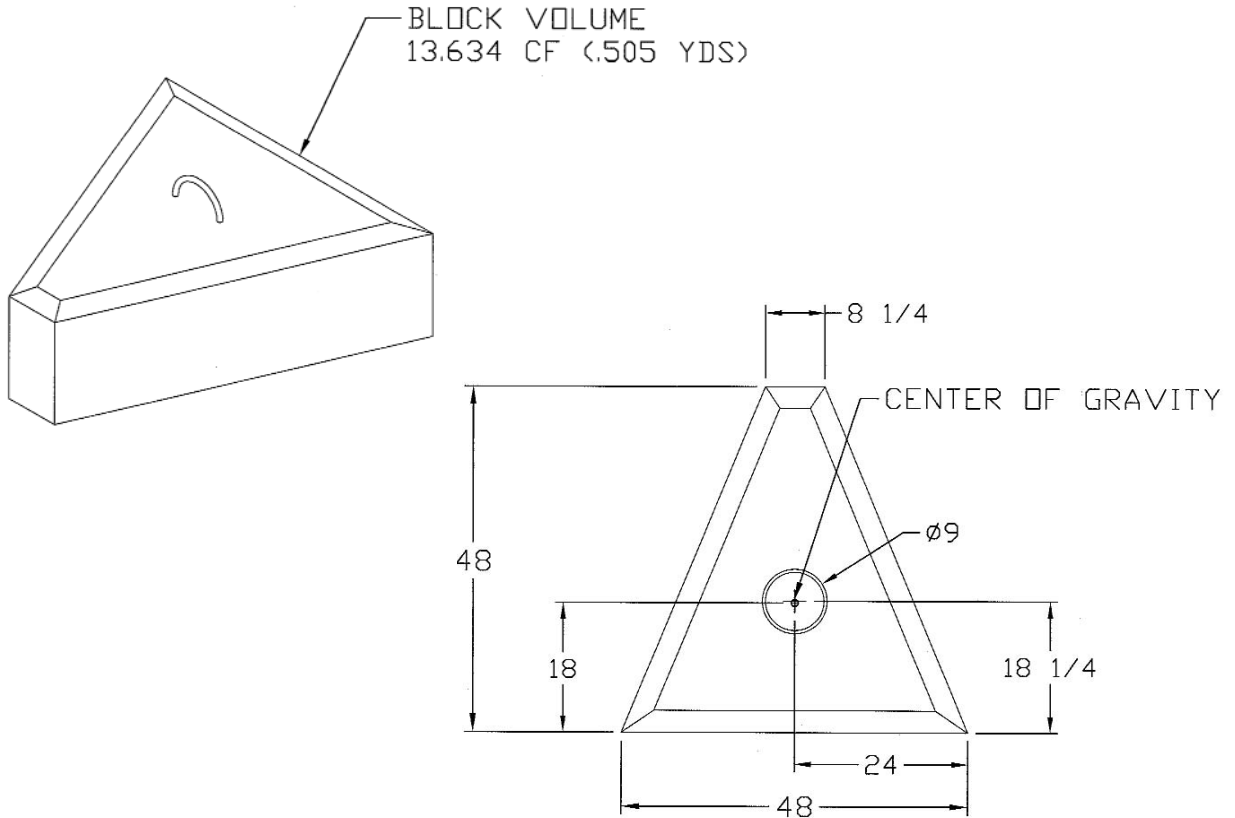
Block Wt. = 2,600 lbs

Form Wt. = 2,456 lbs

Concrete Volume = 0.65 cu. yds.

Rock In-fill for installation ~ 0.2 cu. yds.





45° Block

Block Wt. = 2,000 lbs
 Concrete Volume = .50 cu. yds.
 Produced with Insert in Column form
 Insert Wt. = 870 lbs
 Rock In-fill for installation ~ 0 cu. yds.

